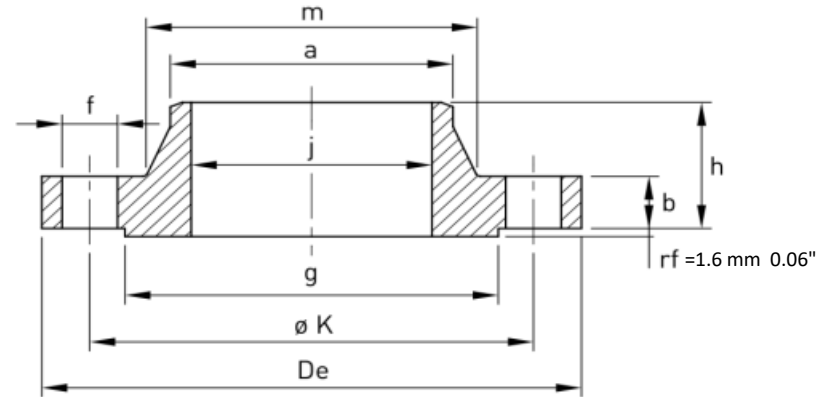




## FLANGES ANSI B16.5 150lbs Welding Neck RF XS



DN	De	b	g	m	j (schedula)	h	K	Holes	a	f	Kg
1"	108,00	14,20	50,80	49,30	24,30	55,60	79,20	4	33,5	15,70	<b>1,14</b>
2"	152,40	19,10	91,90	77,70	49,30	63,50	120,70	4	60,5	19,10	<b>2,82</b>
4"	228,60	23,90	157,20	134,90	97,20	76,20	190,50	8	114,3	19,10	<b>7,44</b>
6"	279,40	25,40	215,90	192,00	146,30	88,90	241,30	8	168,4	22,40	<b>11,40</b>

ANSI B16.5  
150lbs WELDING NECK RF XS