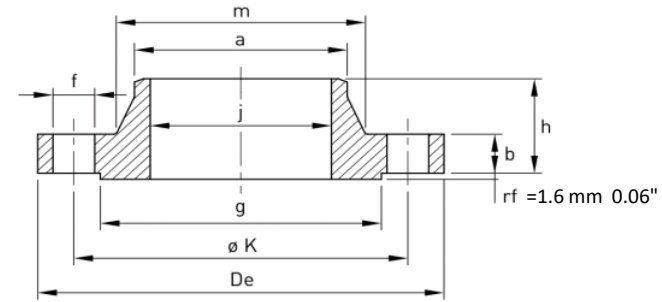




FLANGES ANSI B16.5 150lbs Welding Neck RF



| DN | De | b | g | m | j (schedula) | h | K | Holes | a | f | Kg | Wall thickness |
|--------|--------|-------|--------|--------|-----------------|--------|--------|-------|-------|-------|--------------|-------------------|
| 1/2" | 88,90 | 11,20 | 35,10 | 30,20 | 15,70 | 47,80 | 60,50 | 4 | 21,3 | 15,70 | 0,56 | 2,80 |
| 3/4" | 98,60 | 12,70 | 42,90 | 38,10 | 20,80 | 52,30 | 69,90 | 4 | 26,7 | 15,70 | 0,81 | 2,95 |
| 1" | 108,00 | 14,20 | 50,80 | 49,30 | 26,70 | 55,60 | 79,20 | 4 | 33,5 | 15,70 | 1,14 | 3,40 |
| 1 1/4" | 117,30 | 15,70 | 63,50 | 58,70 | 35,10 | 57,20 | 88,90 | 4 | 42,2 | 15,70 | 1,47 | 3,55 |
| 1 1/2" | 127,00 | 17,50 | 73,20 | 65,00 | 40,90 | 62,00 | 98,60 | 4 | 48,3 | 15,70 | 1,89 | 3,70 |
| 2" | 152,40 | 19,10 | 91,90 | 77,70 | 52,60 | 63,50 | 120,70 | 4 | 60,5 | 19,10 | 2,82 | 3,95 |
| 2 1/2" | 177,80 | 22,40 | 104,60 | 90,40 | 62,70 | 69,90 | 139,70 | 4 | 73,2 | 19,10 | 4,47 | 5,25 |
| 3" | 190,50 | 23,90 | 127,00 | 108,00 | 78,00 | 69,90 | 152,40 | 4 | 88,9 | 19,10 | 5,32 | 5,45 |
| 4" | 228,60 | 23,90 | 157,20 | 134,90 | 102,40 | 76,20 | 190,50 | 8 | 114,3 | 19,10 | 7,44 | 5,95 |
| 5" | 254,00 | 23,90 | 185,70 | 163,60 | 128,30 | 88,90 | 215,90 | 8 | 141,2 | 22,40 | 9,32 | 6,45 |
| 6" | 279,40 | 25,40 | 215,90 | 192,00 | 154,20 | 88,90 | 241,30 | 8 | 168,4 | 22,40 | 11,40 | 7,10 |
| 8" | 342,90 | 28,40 | 269,70 | 246,10 | 202,70 | 101,60 | 298,50 | 8 | 219,2 | 22,40 | 18,76 | 8,25 |
| 10" | 406,40 | 30,20 | 323,90 | 304,80 | 254,50 | 101,60 | 362,00 | 12 | 273,1 | 25,40 | 25,75 | 9,30 |
| 12" | 482,60 | 31,80 | 381,00 | 365,30 | 304,80 | 114,30 | 431,80 | 12 | 323,9 | 25,40 | 39,51 | 9,55 |
| 14" | 533,40 | 35,10 | 412,80 | 400,10 | 336,60 | 127,00 | 476,30 | 12 | 355,6 | 28,40 | 52,25 | 9,50 |
| 16" | 596,90 | 36,60 | 469,90 | 457,20 | 387,40 | 127,00 | 539,80 | 16 | 406,4 | 28,40 | 64,62 | 9,50 |
| 18" | 635,00 | 39,60 | 533,40 | 505,00 | 438,20 | 139,70 | 577,90 | 16 | 457,2 | 31,80 | 72,79 | 9,50 |

ANSI B16.5
150lbs WELDING NECK RF