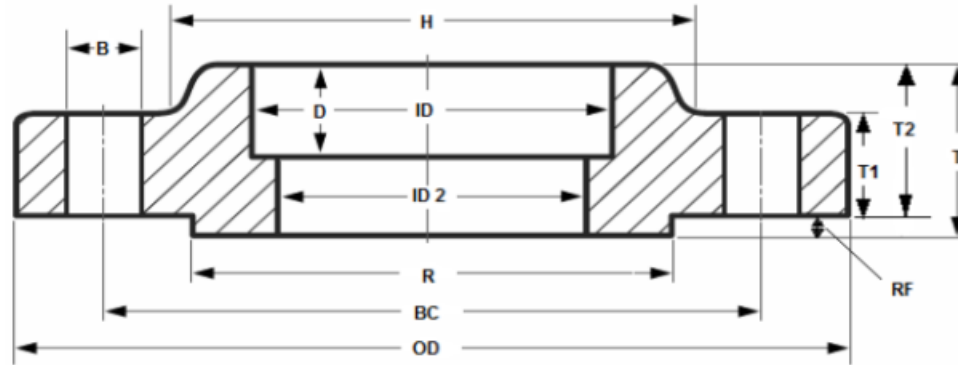




**FLANGES ANSI B16.5 150lbs SW RF**



DN	OD	ID	ID2	D	T1	T	H	R	Holes	B	BC	Kg
1/2"	88,90	22,40	15,70	9,60	11,20	15,70	30,20	35,10	4	15,70	60,50	0,42
3/4"	98,60	27,70	20,80	11,10	12,70	15,70	38,10	42,90	4	15,70	69,90	0,59
1"	108,00	34,50	26,70	12,70	14,20	17,50	49,30	50,80	4	15,70	79,20	0,81
1 1/4"	117,30	43,20	35,10	14,20	15,70	20,60	58,70	63,50	4	15,70	88,90	1,07
1 1/2"	127,00	49,50	40,90	15,70	17,50	22,40	65,00	73,10	4	15,70	98,60	1,36
2"	152,40	62,00	52,60	17,50	19,10	25,40	77,70	91,90	4	19,10	120,70	2,10
2 1/2"	177,80	74,70	62,70	19,00	22,40	28,40	90,40	104,60	4	19,10	139,70	3,33
3"	190,50	90,70	78,00	20,60	23,90	30,20	108,00	127,00	4	19,10	152,40	3,90

ANSI B16.5  
150lbs SOCKET WELDING RF