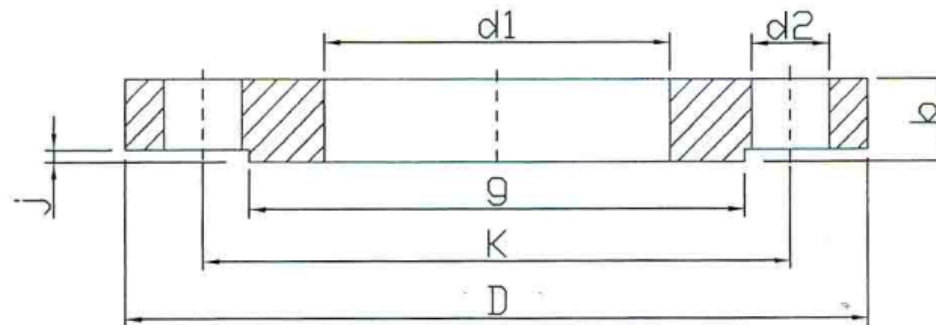




## FLANGES EN 1092-1 TYPE 01 PN10 (PLATE) RF



DN	pipe	d1	k	D	j	b	g	d2	Thread	Number of drills	Weight kg
200	219,1	221,5	295	340	3	24	268	22	M20	8	8,532
250	273,0	276,5	350	395	3	26	320	22	M20	12	10,936
300	323,9	327,5	400	445	4	26	370	22	M20	12	12,252
350	355,6	359,5	460	505	4	30	430	22	M20	16	20,288
400	406,4	411,0	515	565	4	32	482	26	M24	16	25,670
450	457,2	462,0	565	615	4	36	532	26	M24	20	31,548
500	508,0	513,5	620	670	4	38	585	26	M24	20	37,916

EN 1092-1  
TYPE 01B PN10