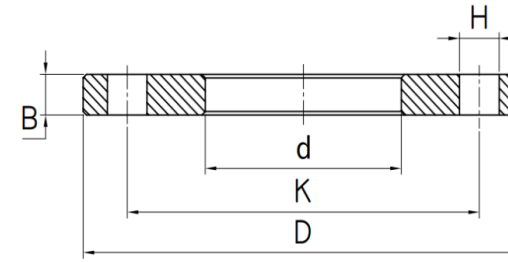


UNI 2278 PN 16

FLANGES UNI 2278 PN16



| DN | pipe | d | K | D | B | H | Thread | Number of drills | Weight kg |
|------|--------|--------|------|------|----|----|--------|------------------|-----------|
| 15 | 21,3 | 22,0 | 65 | 95 | 12 | 14 | M12 | 4 | 0,574 |
| 20 | 26,9 | 27,5 | 75 | 105 | 14 | 14 | M12 | 4 | 0,818 |
| 25 | 33,7 | 34,0 | 85 | 115 | 14 | 14 | M12 | 4 | 0,974 |
| 32 | 42,4 | 43,0 | 100 | 140 | 16 | 18 | M16 | 4 | 1,622 |
| 40 | 48,3 | 49,0 | 110 | 150 | 16 | 18 | M16 | 4 | 1,854 |
| 50 | 60,3 | 61,5 | 125 | 165 | 18 | 18 | M16 | 4 | 2,457 |
| 65 | 76,1 | 77,0 | 145 | 185 | 18 | 18 | M16 | 4 | 2,995 |
| 80 | 88,9 | 90,0 | 160 | 200 | 20 | 18 | M16 | 8 | 3,612 |
| 100 | 114,3 | 115,5 | 180 | 220 | 22 | 18 | M16 | 8 | 4,402 |
| 125 | 139,7 | 141,0 | 210 | 250 | 24 | 18 | M16 | 8 | 5,920 |
| 150 | 168,3 | 170,0 | 240 | 285 | 24 | 22 | M20 | 8 | 7,166 |
| 200 | 219,1 | 221,0 | 295 | 340 | 26 | 22 | M20 | 12 | 9,765 |
| 250 | 273,0 | 275,0 | 355 | 405 | 32 | 25 | M22 | 12 | 15,953 |
| 300 | 323,9 | 326,0 | 410 | 460 | 32 | 25 | M22 | 12 | 19,290 |
| 350 | 355,6 | 358,0 | 470 | 520 | 36 | 25 | M22 | 16 | 29,335 |
| 400 | 406,4 | 409,0 | 525 | 580 | 38 | 30 | M27 | 16 | 36,230 |
| 450 | 457,2 | 460,2 | 585 | 640 | 40 | 30 | M27 | 20 | 44,323 |
| 500 | 508,0 | 511,0 | 650 | 715 | 42 | 33 | M30 | 20 | 59,094 |
| 600 | 609,6 | 612,6 | 770 | 840 | 44 | 36 | M33 | 20 | 82,535 |
| 700 | 711,2 | 714,2 | 840 | 910 | 46 | 36 | M33 | 24 | 81,330 |
| 800 | 812,8 | 815,8 | 950 | 1025 | 48 | 39 | M36x3 | 24 | 103,109 |
| 900 | 914,4 | 917,4 | 1050 | 1125 | 50 | 39 | M36x3 | 28 | 117,518 |
| 1000 | 1016,0 | 1019,0 | 1170 | 1255 | 50 | 42 | M36x3 | 28 | 149,752 |
| 1100 | 1120,0 | 1124,0 | 1270 | 1355 | 50 | 42 | M39 | 32 | 159,048 |
| 1200 | 1220,0 | 1224,0 | 1390 | 1485 | 52 | 48 | M45 | 32 | 202,939 |
| 1300 | 1320,0 | 1324,0 | 1490 | 1585 | 52 | 48 | M45 | 32 | 219,666 |
| 1400 | 1420,0 | 1424,0 | 1590 | 1685 | 54 | 48 | M45 | 36 | 242,418 |
| 1600 | 1620,0 | 1624,0 | 1820 | 1930 | 56 | 56 | M52 | 40 | 331,156 |