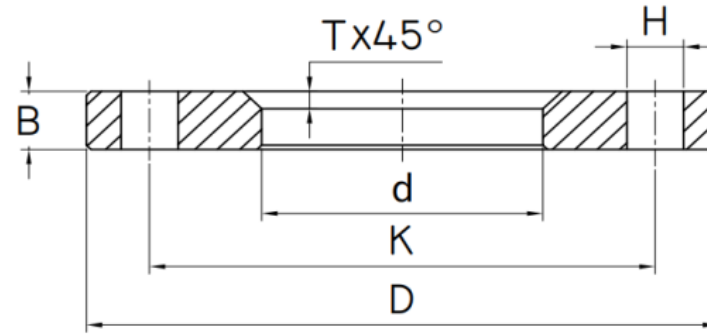


## FLANGES EN 1092-1 TYPE 02 PN10 (LAPPED)



EN 1092-1  
TYPE 02 PN10

DN	D	K	B	d	H	e	Thread	Number of drills	Weight Kg
200	340	295	24	226	22	6	M20	8	8,947
250	395	350	26	281	22	8	M20	12	11,387
300	445	400	26	333	22	8	M20	12	12,997
350	505	460	30	365	22	8	M20	16	21,032
400	565	515	32	416	26	8	M24	16	26,623
450	615	565	36	467	26	8	M24	20	32,443
500	670	620	38	519	26	8	M24	20	38,777