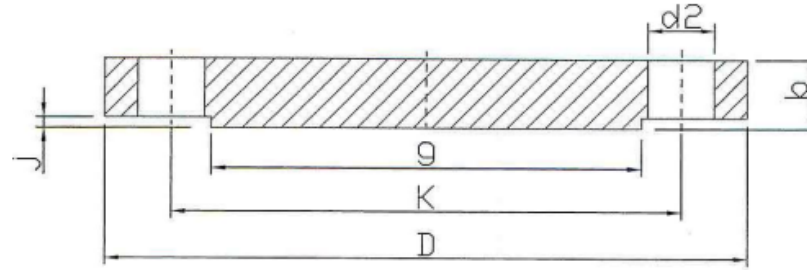


EN 1092-1 TYPE 05B PN40 (BLIND) - RF



DN	K	D	b	d2	Thread	Number of drills	g	j	Weight kg
50	125	165	20	18	M16	4	102	3	3,196
65	145	185	22	18	M16	8	122	3	4,288
80	160	200	24	18	M16	8	138	3	5,532
100	190	235	24	22	M20	8	162	3	7,575
125	220	270	26	26	M24	8	188	3	10,813
150	250	300	28	26	M24	8	218	3	14,596
200	320	375	36	30	M27	12	285	3	28,801
250	385	450	38	33	M30	12	345	3	44,358
300	450	515	42	33	M30	16	410	4	64,134
350	510	580	46	36	M33	16	465	4	89,479
400	585	660	50	39	M36	16	535	4	126,716
450	610	685	57	39	M36	20	560	4	153,740
500	670	755	57	42	M39	20	615	4	187,350

EN 1092-1
TYPE 05B PN40