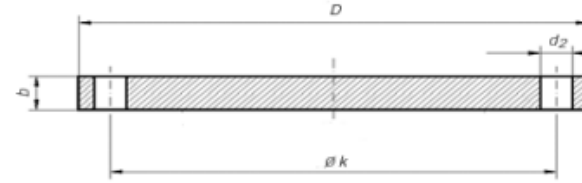


EN 1092-1 TYPE 05 PN40 (BLIND)



DN	k	D	b	d2	Thread	Number of drills	Weight kg
50	125	165	20	18	M16	4	3,196
65	145	185	22	18	M16	8	4,288
80	160	200	24	18	M16	8	5,532
100	190	235	24	22	M20	8	7,575
125	220	270	26	26	M24	8	10,813
150	250	300	28	26	M24	8	14,596
200	320	375	36	30	M27	12	28,801
250	385	450	38	33	M30	12	44,358
300	450	515	42	33	M30	16	64,134
350	510	580	46	36	M33	16	89,479
400	585	660	50	39	M36	16	126,716
450	610	685	57	39	M36	20	153,740
500	670	755	57	42	M39	20	187,350
600	795	890	72	48	M45	20	330,152

EN 1092-1
TYPE 05A PN40