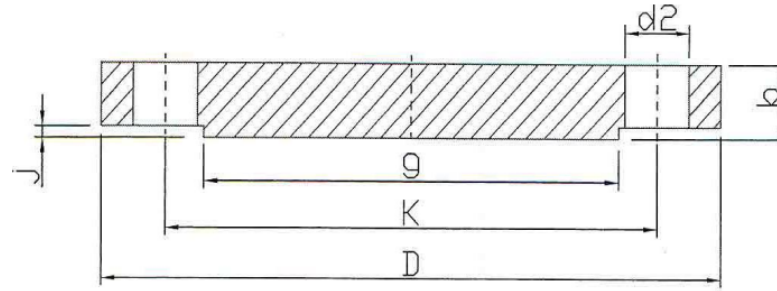


EN1092-1 TYPE 05 PN 16 (Blind) - RF



EN 1092-1
TYPE 05B PN16

DN	K	D	b	d2	Thread	Number of drills	j	g	Weight kg
15	65	95	16	14	M12	4	2	45	0,737
20	75	105	18	14	M12	4	2	58	1,051
25	85	115	18	14	M12	4	2	68	1,280
32	100	140	18	18	M16	4	2	78	1,880
40	110	150	18	18	M16	4	3	88	2,098
50	125	165	18	18	M16	4	3	102	2,583
65	145	185	18	18	M16	4	3	122	3,310
80	160	200	20	18	M16	8	3	138	4,260
100	180	220	20	18	M16	8	3	158	5,247
125	210	250	22	18	M16	8	3	188	7,648
150	240	285	22	22	M20	8	3	212	9,862
200	295	340	24	22	M20	12	3	268	15,496
250	355	405	26	26	M24	12	3	320	23,993
300	410	460	28	26	M24	12	4	378	33,620
350	470	520	30	26	M24	16	4	438	46,324
400	525	580	32	30	M27	16	4	490	61,482
500	650	715	44	33	M30	20	4	610	129,823