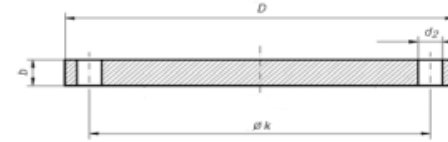


**EN 1092-1 TYPE 05 PN16 (BLIND)**



EN 1092-1  
TYPE 05A PN16

| DN  | k   | D   | b  | d2 | Thread | Number of drills | Weight kg |
|-----|-----|-----|----|----|--------|------------------|-----------|
| 15  | 65  | 95  | 16 | 14 | M12    | 4                | 0,813     |
| 20  | 75  | 105 | 18 | 14 | M12    | 4                | 1,136     |
| 25  | 85  | 115 | 18 | 14 | M12    | 4                | 1,380     |
| 32  | 100 | 140 | 18 | 18 | M16    | 4                | 2,030     |
| 40  | 110 | 150 | 18 | 18 | M16    | 4                | 2,352     |
| 50  | 125 | 165 | 18 | 18 | M16    | 4                | 2,876     |
| 65  | 145 | 185 | 18 | 18 | M16    | 4                | 3,653     |
| 65  | 145 | 185 | 18 | 18 | M16    | 8                | 3,500     |
| 80  | 160 | 200 | 20 | 18 | M16    | 8                | 4,610     |
| 100 | 180 | 220 | 20 | 18 | M16    | 8                | 5,646     |
| 125 | 210 | 250 | 22 | 18 | M16    | 8                | 8,122     |
| 150 | 240 | 285 | 22 | 22 | M20    | 8                | 10,487    |
| 200 | 295 | 340 | 24 | 22 | M20    | 12               | 16,238    |
| 250 | 355 | 405 | 26 | 26 | M24    | 12               | 24,980    |
| 300 | 410 | 460 | 28 | 26 | M24    | 12               | 35,110    |
| 350 | 470 | 520 | 30 | 26 | M24    | 16               | 47,989    |
| 400 | 525 | 580 | 32 | 30 | M27    | 16               | 63,496    |
| 450 | 585 | 640 | 40 | 30 | M27    | 20               | 96,525    |
| 500 | 650 | 715 | 44 | 33 | M30    | 20               | 132,708   |
| 600 | 770 | 840 | 54 | 36 | M33    | 20               | 226,171   |