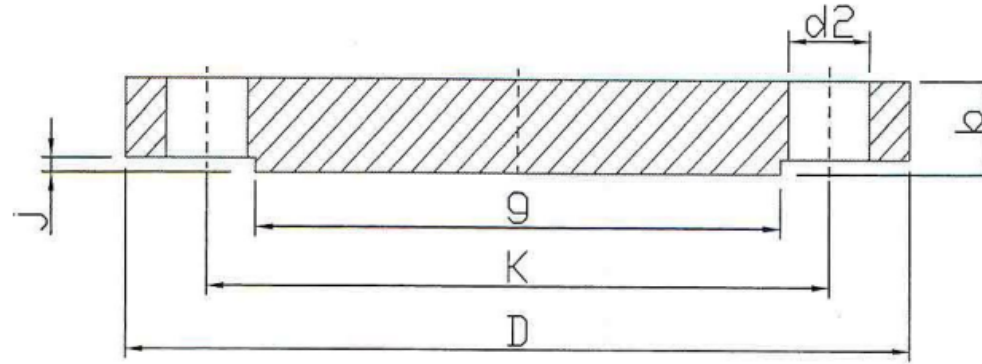




**EN 1092-1 TYPE 05B PN10 (BLIND) - RF**



DN	K	D	b	d2	Thread	Number of drills	g	j	Weight kg
200	295	340	24	22	M20	8	268	3	15,788
250	350	395	26	22	M20	12	320	3	23,186
300	400	445	26	22	M20	12	370	4	29,437
350	460	505	26	22	M20	16	430	4	38,085
400	515	565	26	26	M24	16	482	4	47,542
450	565	615	28	26	M24	20	532	4	60,919
500	620	670	28	26	M24	20	585	4	72,832

EN 1092-1  
TYPE 05B PN10