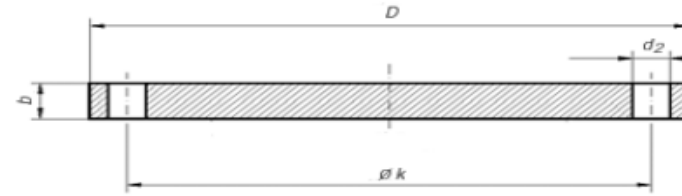


EN 1092-1 TYPE 05 PN10 (BLIND)



EN 1092-1
TYPE 05A PN10

DN	k	D	b	d2	Thread	Number of drills	Weight kg
200	295	340	24	22	M20	8	16,524
250	350	395	26	22	M20	12	24,068
300	400	445	26	22	M20	12	30,797
350	460	505	26	22	M20	16	39,619
400	515	565	26	26	M24	16	49,413
450	565	615	28	26	M24	20	62,927
500	620	670	28	26	M24	20	75,122
600	725	780	34	30	M27	20	123,699
700	840	895	38	30	M27	24	182,514
800	950	1015	48	33	M30	24	296,997