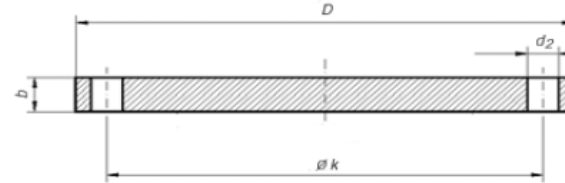


UNI 6095 PN 40

FLANGE UNI 6095 PN40



DN	k	D	b	d2	Thread	Number of drills	Weight kg
50	125	165	20	18	M16	4	3,196
65	145	185	22	18	M16	8	4,288
80	160	200	24	18	M16	8	5,532
100	190	235	24	22	M20	8	7,595
125	220	270	26	25	M22	8	10,879
150	250	300	28	25	M22	8	14,666
200	320	375	34	30	M27	12	27,200
250	385	450	38	33	M30	12	44,358
300	450	515	42	33	M30	16	64,134
350	510	580	46	36	M33	16	89,479
400	585	660	50	39	M36X3	16	126,716
450	610	685	52	39	M36X3	20	140,609
500	670	755	52	42	M39X3	20	171,352