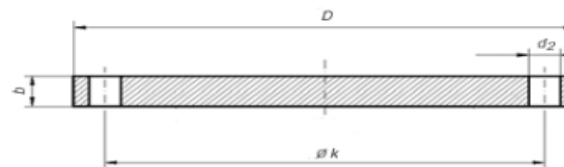


UNI 6092 PN 10

FLANGES UNI 6092 PN10



DN	k	D	b	d2	Thread	Number of drills	Weight kg
80	160	200	20	18	M16	4	4,758
200	295	340	24	22	M20	8	16,524
250	350	395	26	22	M20	12	24,068
300	400	445	26	22	M20	12	30,797
350	460	505	26	22	M20	16	39,619
400	515	565	26	25	M22	16	49,544
450	565	615	26	25	M22	20	58,596
500	620	670	28	25	M22	20	75,298
600	725	780	28	30	M27	20	123,699
700	840	895	30	30	M27	24	144,090
800	950	1015	33	33	M30	24	204,186
900	1050	1115	34	33	M30	28	254,088
1000	1160	1230	34	36	M33	28	309,375
1100	1270	1340	36	36	M33	32	389,138
1200	1380	1455	38	39	M36	32	484,337
1300	1490	1575	38	43	M39	32	567,022
1400	1590	1675	38	43	M39	36	641,394
1500	1700	1785	40	43	M39	36	768,965
1600	1820	1915	40	48	M45	40	881,218